



Internet Connection Guide

Stage 1 Ethernet cable

You must have an Ethernet cable.

- UTP Straight-Through cable



Stage 2 Your PC

Your PC will require a 10 or a 10/100 Base-T Network Interface Card (NIC), installed.

If you do not have a NIC, you cannot proceed with the installation of your broadband service unless you purchase an Ethernet/USB adaptor from a retailer.

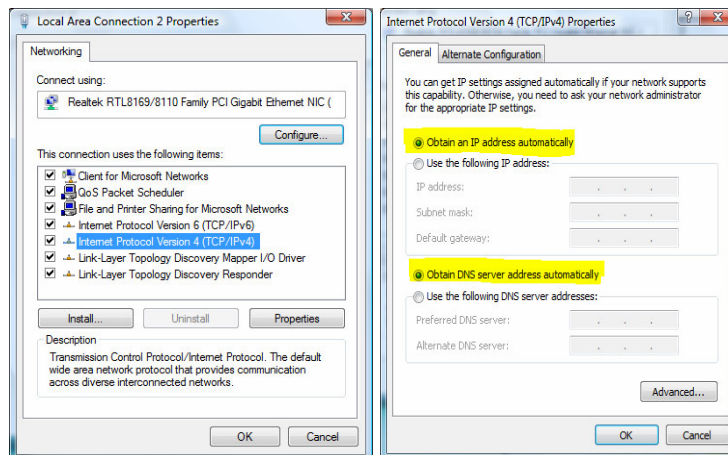
Stage 3

Connect one end of the 10Base-T cable to the 10Base-T port in your room, and the other end of the 10Base-T on to the NIC card on your PC, then turn your power on.

Stage 4 Configuring your PC

The configuration guide below should only be used for installation on Windows Vista operating systems

- I) On your Windows desktop, go to **Start > Control Panel > Network & Internet > Network & Sharing Centre**. Under **Tasks** list at left hand side, select **Manage Network Connections**;
- II) In the new window opened, double click on **Local Area Connection**, and then click on **Properties**, Click **Continue** if there is a security warning popup;
- III) Inside the **Local Area Connection Properties window**, double click on **Internet Protocol Version 4 (TCP/IPv4)**;
- IV) Select the **Obtain an IP address automatically & Obtain DNS server address automatically**;
- V) Click OK, and close all other opened windows.



Stage 4 Browsing the WEB

Your installation is now complete. You can now launch your internet browser, log on using the login and password allocated, and browse any web page.

Support : Please CHECK that you have followed the instructions correctly, If you still have any issues with the internet service you may contact support on 1300 723 534.